

## Press Release:

### TheGenealogist releases 60,000 railway worker records

- More than 60,000 railway workers have been added to the Occupational Records on TheGenealogist
- Find details of railway ancestors, where they were employed and what they did
- Trace your railway worker ancestor's careers through their promotions
- Discover when they retired
- Read obituaries

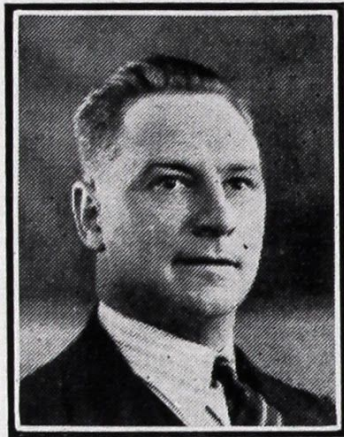
The Genealogist has added over 60,000 rail workers to its online indexes of Railway Employment Records. Taken from Railway Company Staff magazines these records are useful to family historians with railway employee ancestors, wanting to find important occupation related dates and add some social history to their family tree. These records include such details as staff changes, promotions, pension records, retirements and obituaries. Often additional personal information is revealed in the magazines. In some cases you can read about gifts from co-workers given when rail staff leave.

Occupation » Railway Employment Records » Full	
Title	Mr
Forename	A N
Surname	Train
Occupation	Station Master
Entry	Obituary
Station	Whitedale and Sigglesythorne
Year of Birth	1870
Retirement Date	31st March 1932
Date of Death	1st October 1949
Age	79
Source	British Railways Magazine
Issue	Vol 2 No 11
Record Date	November 1949

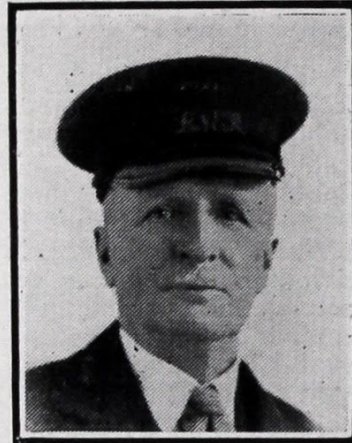
For example, we can discover that Mr A.N.Train had been a Station Master at Whitdale and Sigglesythorne, stations that today are converted into private houses sitting as they do on

lines closed under Beeching's cuts in the 1960s. The railwayman's details have been extracted from his obituary in the British Railways Magazine of November 1949 Vol 2 No 11. We can learn such useful details as his retirement date, as well as the date that Mr Train passed away at the age of 79.

One click takes us to an image of the original page on which the record is based.



Mr. W. H. Marshall  
York



Mr. A. N. Train  
Whitedale

MR. W. H. MARSHALL died, after a short illness, at the early age of 49.

He had been a member of the Signal and Telecommunications Department for 35 years, nine of which were spent as inspector in the York area. His cheery personality and unfailing humour will be much missed by his wide circle of friends.

He was an active member of the Trades Union Movement and his membership of Sectional Councils 5 and 1 (he was still a member of the latter at the time of his death) made him a familiar figure over a wide area of the old L.N.E.R.

He was closely associated with committees dealing with many phases of welfare work in Leeds, and his wide and varied knowledge made him a valued member of any committee.

"Manny," as he was affectionately known by his friends, was always ready to sacrifice comfort and leisure to help others and, for those of his colleagues who are left to carry on, the world will seem a poorer place for his passing.

MR. A. N. TRAIN, retired stationmaster, Whitedale and Sigglesworth, died on October 1, aged 79.

He commenced his railway career as a clerk at Hornsea in December, 1883, and retired from the position of stationmaster at Whitedale and Sigglesworth on March 31, 1932.

####

For more information on TheGenealogist, please contact Nick at: [nick@thegenealogist.co.uk](mailto:nick@thegenealogist.co.uk)