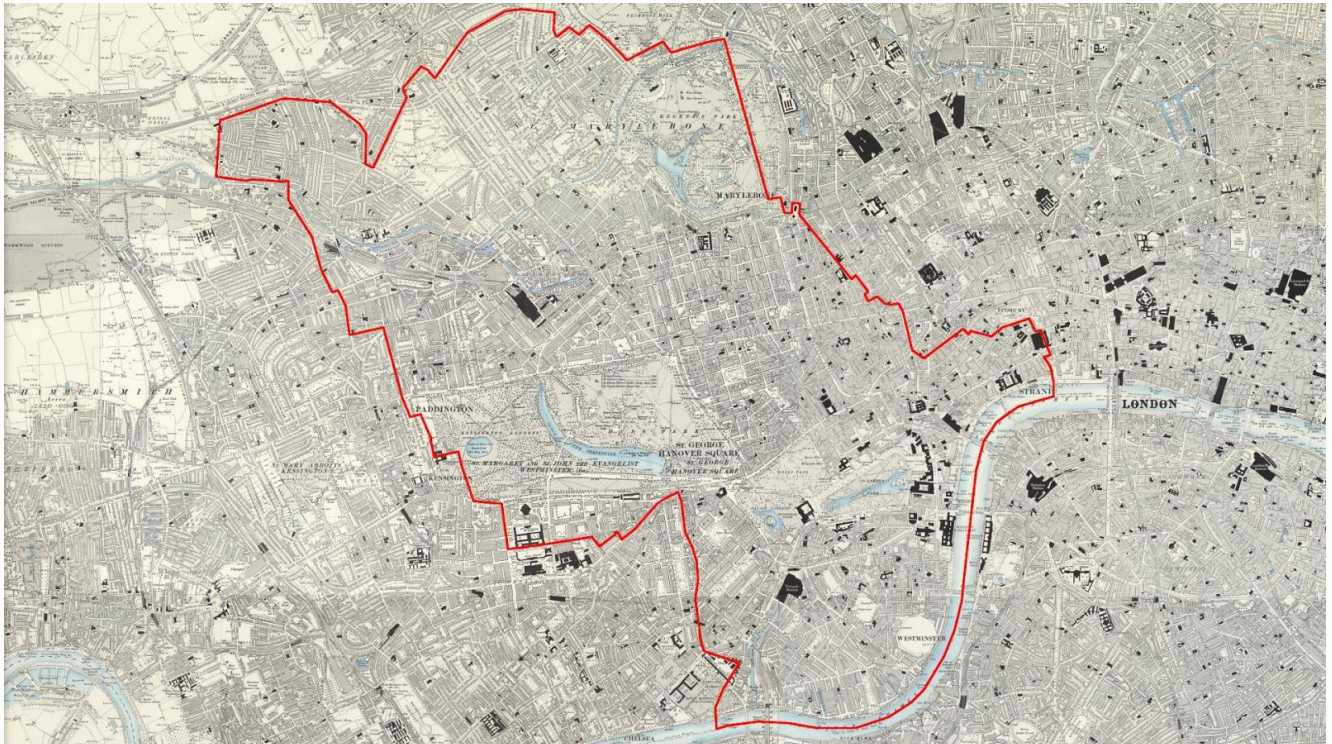


## Press Release: New Release

### Westminster joins the 1910 Lloyd George Domesday Records with annotated maps

[TheGenealogist](#) has just released the maps and field books for the Westminster area into its exciting record set, *The Lloyd George Domesday Survey*. This new release can be used to find where an ancestor lived in 1910 to 1915 in the area around Westminster. This unique combination of maps and residential data held by The National Archives has been digitised by TheGenealogist so that researchers can locate where an ancestor lived. The maps are large scale and exceptionally detailed with hand annotations that, in the majority of cases, allow family historians to find the exact property in the street.



This release of Lloyd George Domesday Survey records covers Westminster and the area shown above

Researchers often have difficulty using modern maps to find where ancestors lived as road names changed over time, the Blitz saw areas bombed to destruction, developers changed sites out of all resemblance from what had stood there before and lanes and roads were extinguished to build housing estates and office blocks. As these records are linked to the maps from the period this means that you have the ability to find the streets as they existed when the survey was carried out and often pinpoint where the old properties had once been.

- Links properties to extremely detailed ordnance survey maps used in 1910
- Shows the original Field book giving a detailed description of the property
- Fully searchable by name, parish and street

Complementing the maps on TheGenealogist are the accompanying Field Books that will provide researchers with detailed information relative to the valuation of each property, including the valuation assessment number, map reference, owner, occupier, situation, description and extent.

This mammoth project is ongoing with over 94,500 Field Books, each having hundreds of pages of information on properties to digitise with associated large scale IR121 annotated OS maps.

The release this month covers the civil parishes of Brook, Bryanston Square, Cavendish Square, Church, Conduit, Curzon, Dorset Square, Dover, Great Marlborough, Grosvenor, Hamilton Terrace, Hamlet of Knightsbridge, Hyde Park, Knightsbridge, Lancaster Gate, Liberty Of The Rolls, Maida Vale, Pall Mall, Petty France, Pimlico North, Pimlico South, Portland Place, Portman Square, Queens Park, Regent 1, Regent 2, St Anne Soho, St Clement Danes, St John Westminster, St Martin in the Fields, St Mary Le Strand, St Paul Covent Garden, Westbourne and Westminster. More areas will be released soon for other London Boroughs and the county of Buckinghamshire.

Find out about these land records at: [TheGenealogist.co.uk/1910Survey/](https://www.thegenealogist.co.uk/1910Survey/)

You can read our feature article "Westminster Lloyd George Domesday Survey reveals the American born MP and the Lady with the Lamp" at:  
<https://www.thegenealogist.co.uk/featuredarticles/2018/westminster-lloyd-george-domesday-survey-reveals-the-american-born-mp-and-the-lady-with-the-lamp-1017/>

#### **About TheGenealogist**

*[TheGenealogist](https://www.thegenealogist.co.uk/) is an award-winning online family history website, who put a wealth of information at the fingertips of family historians. Their approach is to bring hard to use physical records to life online with easy to use interfaces such as their Tithe and newly released Lloyd George Domesday collections.*

*[TheGenealogist's](https://www.thegenealogist.co.uk/) innovative SmartSearch technology links records together to help you find your ancestors more easily. [TheGenealogist](https://www.thegenealogist.co.uk/) is one of the leading providers of online family history records. Along with the standard Birth, Marriage, Death and Census records, they also have significant collections of Parish and Nonconformist records, PCC Will Records, Irish Records, Military records, Occupations, Newspaper record collections amongst many others.*

*[TheGenealogist](https://www.thegenealogist.co.uk/) uses the latest technology to help you bring your family history to life. Use [TheGenealogist](https://www.thegenealogist.co.uk/) to find your ancestors today!*

#### **About The National Archives**

*[The National Archives](https://www.nationalarchives.gov.uk/) is one of the world's most valuable resources for research and an independent research organisation in its own right. As the official archive and publisher for the UK government, and England and Wales they are the guardians of some of the UK's most iconic national documents, dating back over 1,000 years. Their role is to collect and secure the future of the government record, both digital and physical, to preserve it for generations to come, and to make it as accessible and available as possible. [The National Archives](https://www.nationalarchives.gov.uk/) brings together the skills and specialisms needed to conserve some of the oldest historic documents as well as leading digital archive practices to manage and preserve government information past, present and future.*  
<http://www.nationalarchives.gov.uk/> <http://www.legislation.gov.uk/>

For the latest stories, follow the Media Team on Twitter [@TNAmidiaofficer](https://twitter.com/TNAmidiaofficer)

####

For more information on TheGenealogist, please contact Nick at [nick@thegenealogist.co.uk](mailto:nick@thegenealogist.co.uk)

Telephone:01722-717976